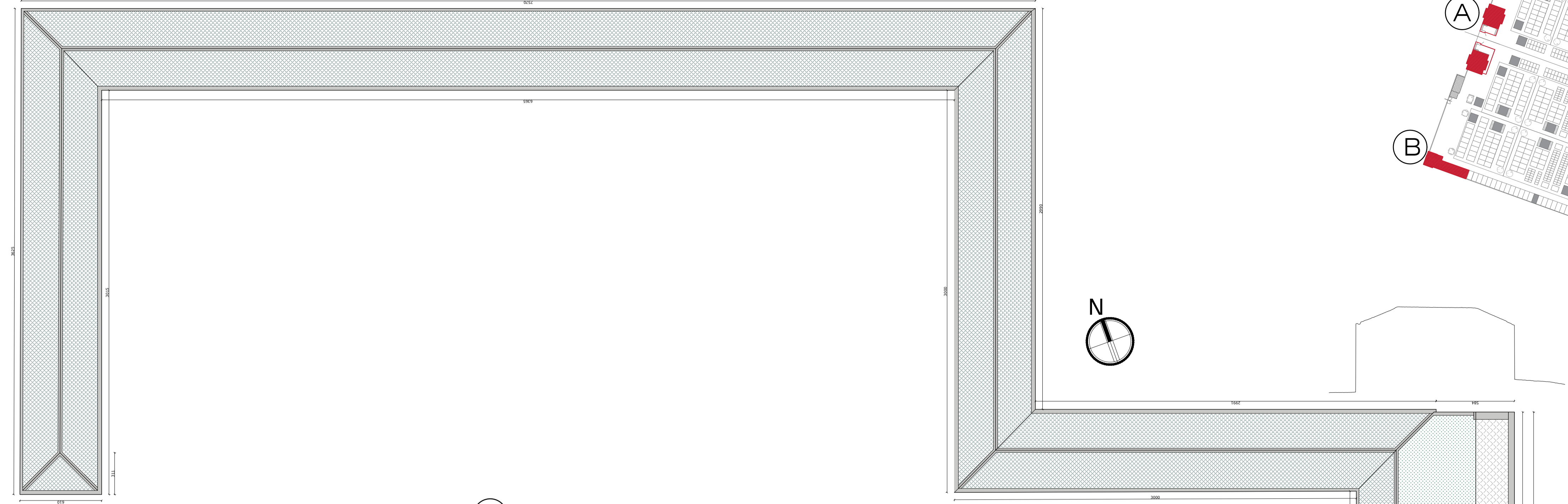
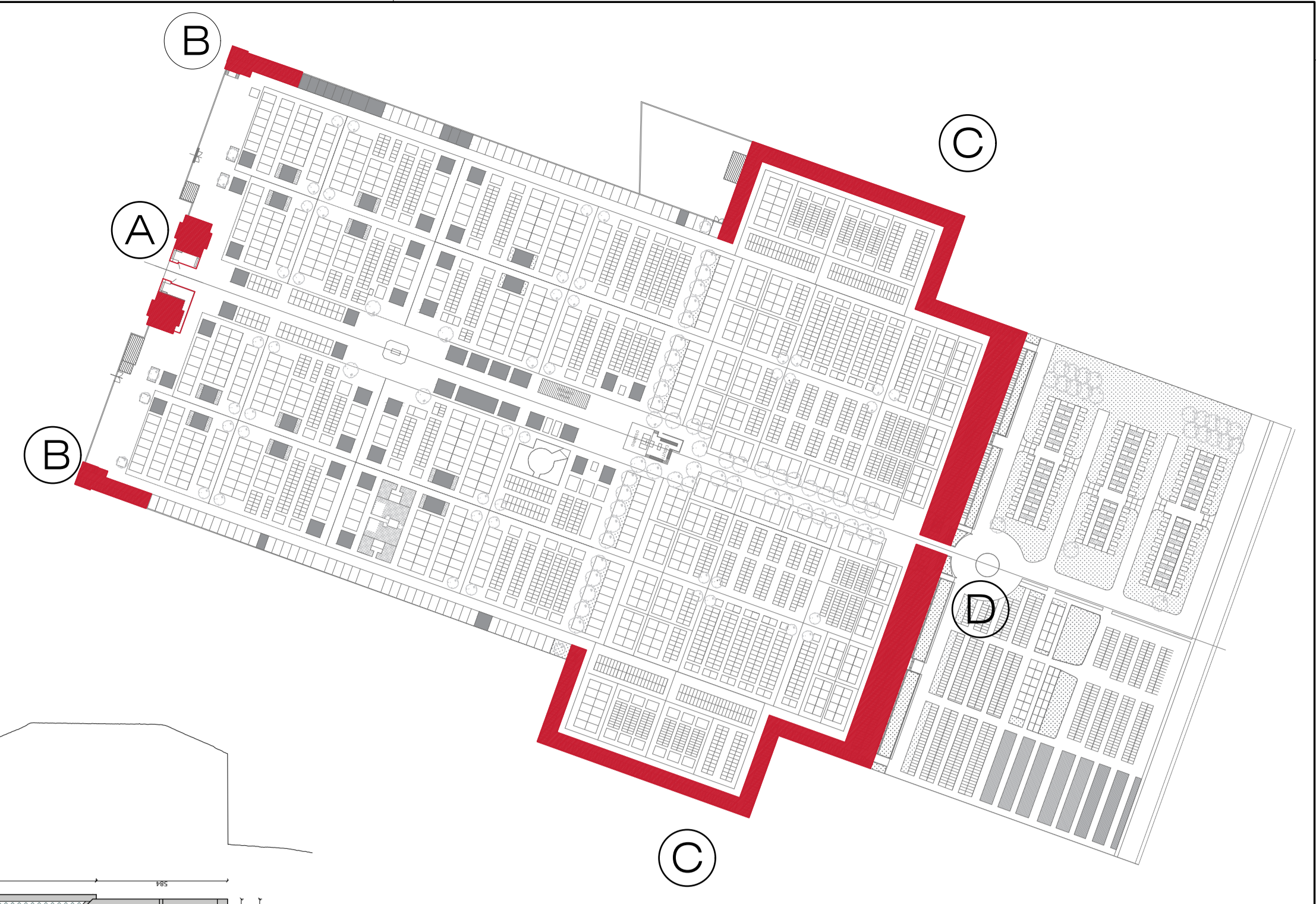
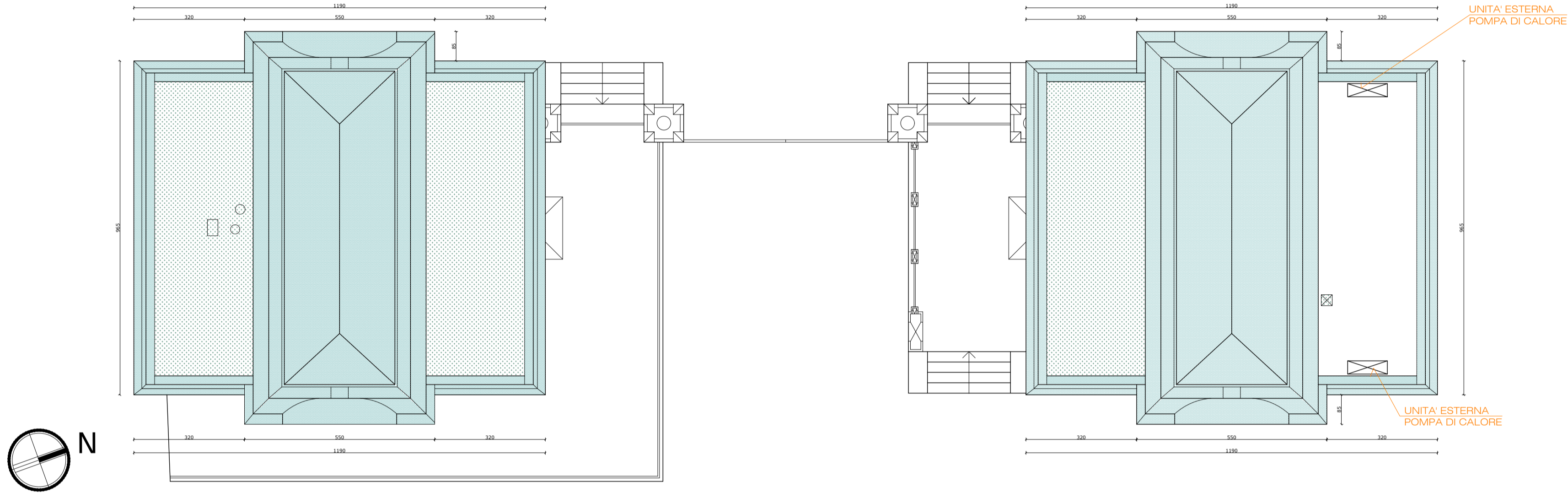


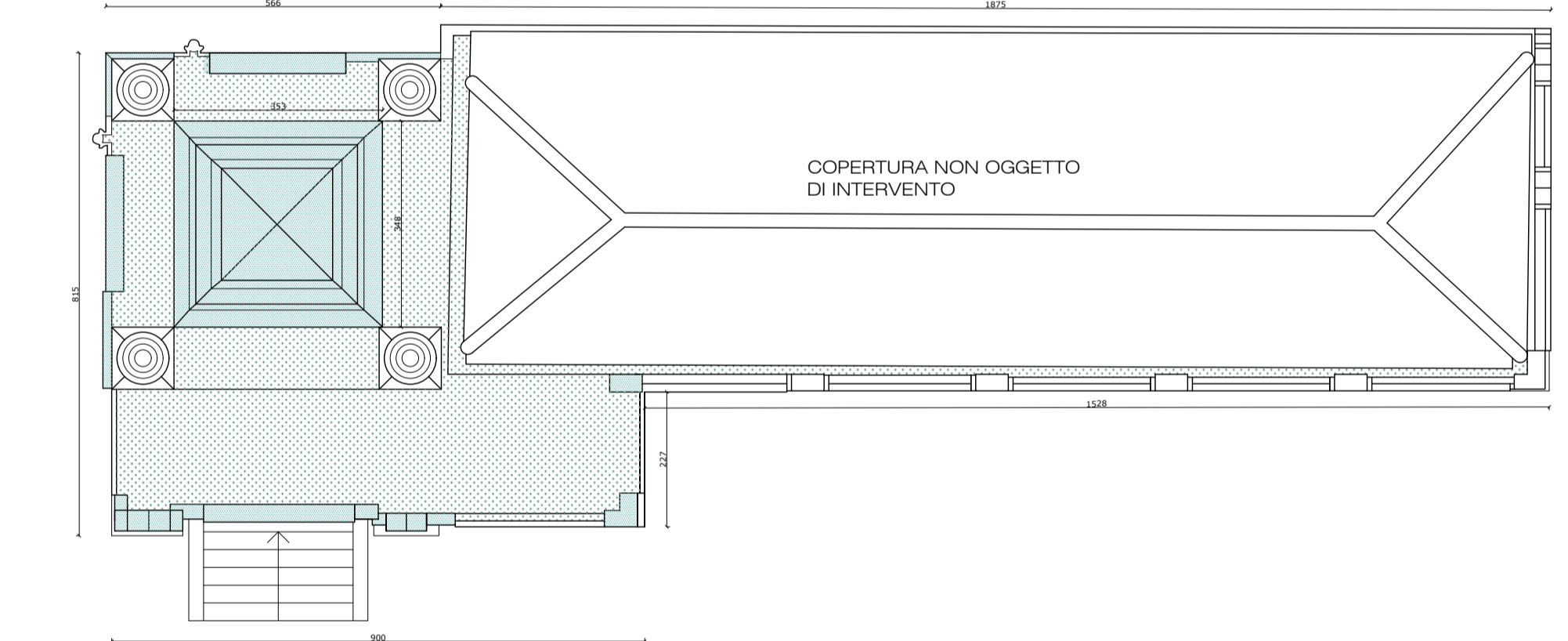
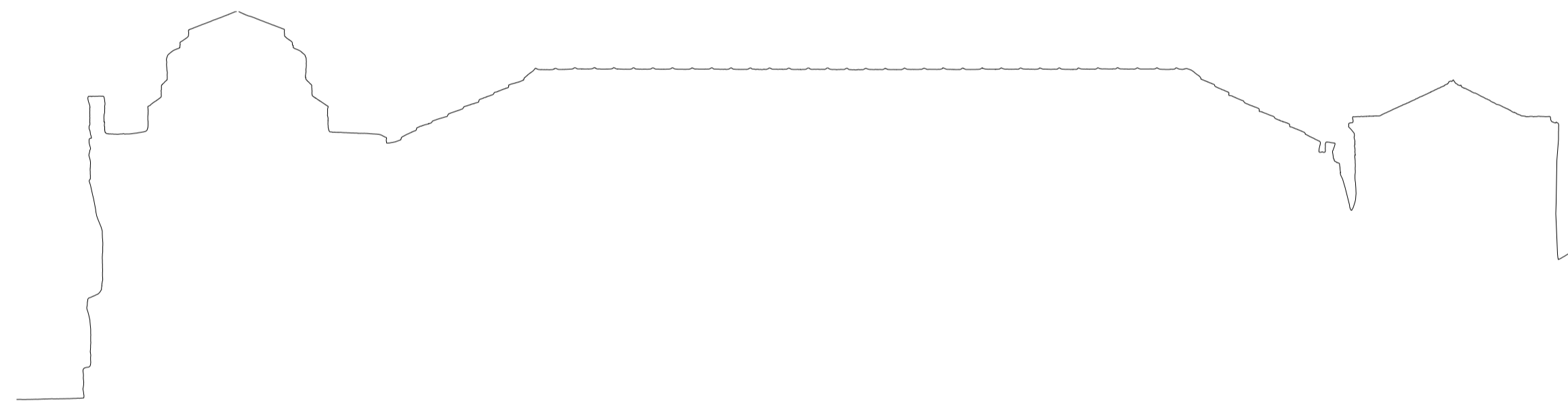
© D CORPO COLOMBARI - scala 1:200



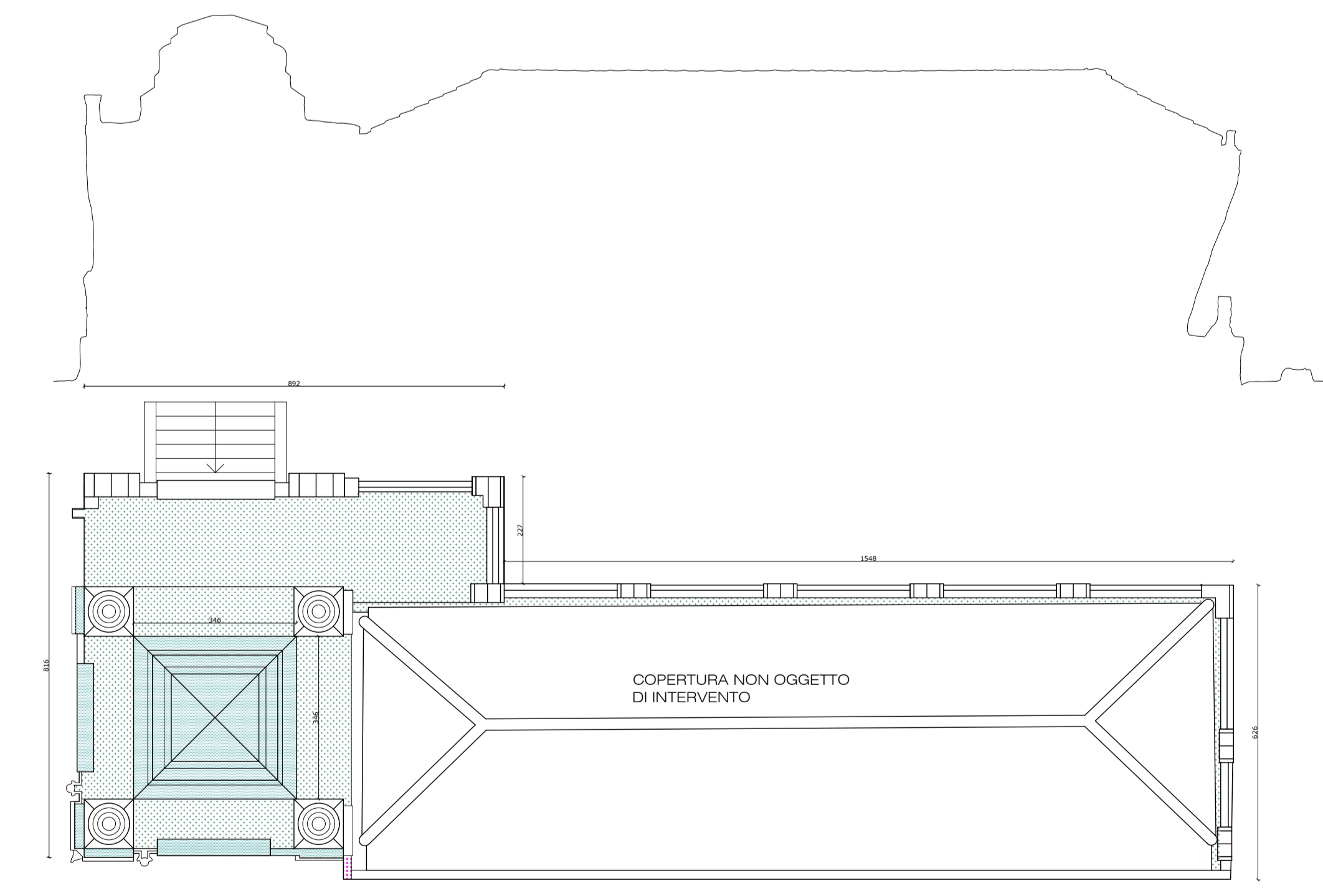
© EDIFICI DI INGRESSO
UFFICI E CAMERA MORTUARIA



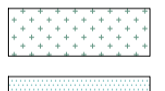




© COLOMBARI



© COLOMBARI



LEGENDA

-  GUAINA ARDESIA COLORE VERDE
-  BOIACCA IMPERMEABILIZZANTE
-  LATTONERIA IN ALLUMINIO PREVERNICIATO COLORE RAL 6019
-  COPERTURA CON TEGOLE-CERAMICA TIPO ARDOGRES MOD. GRIGIO ST. MICHEL 40X40
-  SCAGLIE ARDESIA ESISTENTI

REGIONE LOMBARDIA
COMUNE DI SEREGNO
PROVINCIA DI MONZA E BRIANZA

LAVORI DI MANUTENZIONE TETTI
COLOMBARI E UFFICI E CAMERA
MORTUARIA DEL CIMITERO
PRINCIPALE

PROGETTO DEFINITIVO/ESECUTIVO

CONTRODEDOTTO A SEGUITO DI VERIFICA AI FINI DELLA
VALIDAZIONE - 22062301-2_Seregno_Colombari

PROGETTISTA
ARCH. GIOVANNI BARZAGHI
VIA N. SAURO N.101/D - BRUGHERIO (MB)

DATA

03/03/2023

SCALA

1:100/1:200

INSQUADRAdesign
ARCHITETTURA
INTERIOR DESIGN

ARCHITETTO
GIOVANNI BARZAGHI
ARCHITETTO
GIULIA PERGO

VIA N. SAURO 101
BRUGHERIO - MB -
0310327104
email:
insquadradesign@live.it
pec: giovanni.barzagli@archinordspc.it

OGGETTO:
PIANTA
COPERTURE

PROGETTO

TAV. N° 5